

BASIN AREA

Wildcat Provisions



MAC

Village

The Depot

Patrol

Western Territory

Heisler Way

Hootenanny

Ball Hooter

Flume

Access Road

Boathouse

Outpost

SKILLS EASIEST Y Yew Pine Z Drop Park	INTERMEDIATE L Lucid O Trail O R Raging Bull	ADVANCED C Trail C D Trail D E Trail E F Trail F G Trail G H Trail H J Trail J K Trail K	EXPERT A Trail A B Trail B I Trail I	M Trail M N Trail N S Giant Slalom	+ First Aid 911 Emergency Phone Bike Park Lift Closed Lift	Bike Rentals Ticket Sales Repairs Lessons & Guided Tours	Restrooms Dining Grocery
---	--	---	--	--	---	---	--------------------------------



SNOWSHOEBIKEPARK

ride.snowshoemtn.com

Snowshoe Mountain Bikers Responsibility Code

1. You must have a valid Bike Park Pass to enter this trail system; passes can be purchased at the Depot or the Mountain Adventure Center in the Village.
2. It is your responsibility to maintain control, ride within your ability level, and avoid other people and objects around you.
3. Do not stop on trails and obstruct traffic. If you must stop before the end of a trail, move yourself, your bike, and gear off the side of the trail.
4. Helmets are mandatory in the Bike Park.
5. Slower riders should yield to faster riders.
6. Hiking in the Bike Park is prohibited.
7. Stay off closed trails and obey all posted signs and warnings; failure to do so will likely result in revocation of your trail pass.
8. If you are involved in or witness a collision or accident identify yourself to Bike Patrol.
9. Never enter the Bike Park while under the influence of drugs or alcohol.
10. Please do not approach or disturb wildlife.

Be Aware

- Terrain changes constantly due to weather and use.
- Check the daily trail report at the Mountain Adventure Center or the Depot for Bike Park Hours, Lift Operation Hours, and Shuttle Hours.
- These trails have been designed and constructed for Advanced and Expert Mountain Bikers.
- There are inherent risks when using these trails. Serious injury and / or equipment damage can occur. By using this area you are assuming the risk of all such injury and damages.

Snowshoe Bike Park Packages

Instruction programs are not available on Race Event Weekends. 101 and 202 include Instructor, Lift Ticket, Full Suspension Bike, Helmet, and Armor for the duration of the program. Meeting location is the MAC.

Bike Park 101: The Introduction!

2.5 Hour Program – Weekdays: \$79 – Weekends: \$99 – 9:30am & 1:30pm
 The ideal program for beginner riders looking for a basic introduction to the Snowshoe Bike Park at a low cost. If you're new to mountain biking or have never ridden in a gravity bike park before, Bike Park 101 is the perfect way to begin your education. 101 Lessons begin with rider specific bike set up and fundamental skills mastery and progress onto green trails focusing on cornering, body position, braking, and reading terrain.

Bike Park 202: The Evolution!

3.5 Hour Program – Weekdays: \$99 – Weekends: \$129 – 9:00am & 1:00pm
 Ready to step it up a notch? The 202 program is for graduates of the 101 program, or anyone that has already mastered the basics of beginner level Downhill riding and is looking to improve their confidence and skill on Blue Trails. Focal points during the 202 program include line selection, drops, jumps, and bike control. Meeting times: 9:00am or 1:00pm

Private Instruction

3.5 Hour Program – \$149 for 1 to 4 people – 9:00am & 1:00pm
 There's no better way to reach your riding goals than by booking one of our IMIC Certified Instructors for a private coaching session. You can choose what aspects of your riding you want to work on and our instructors will know just the right trails and features to use for your training ground. We incorporate HD video analysis into each private session for increased comprehension and learning opportunities. Lift tickets are included for the duration of the lesson.

Want to continue riding after your program? You can extend your rental and lift ticket for the rest of the day for only \$40 (weekdays) or \$50 (weekends).

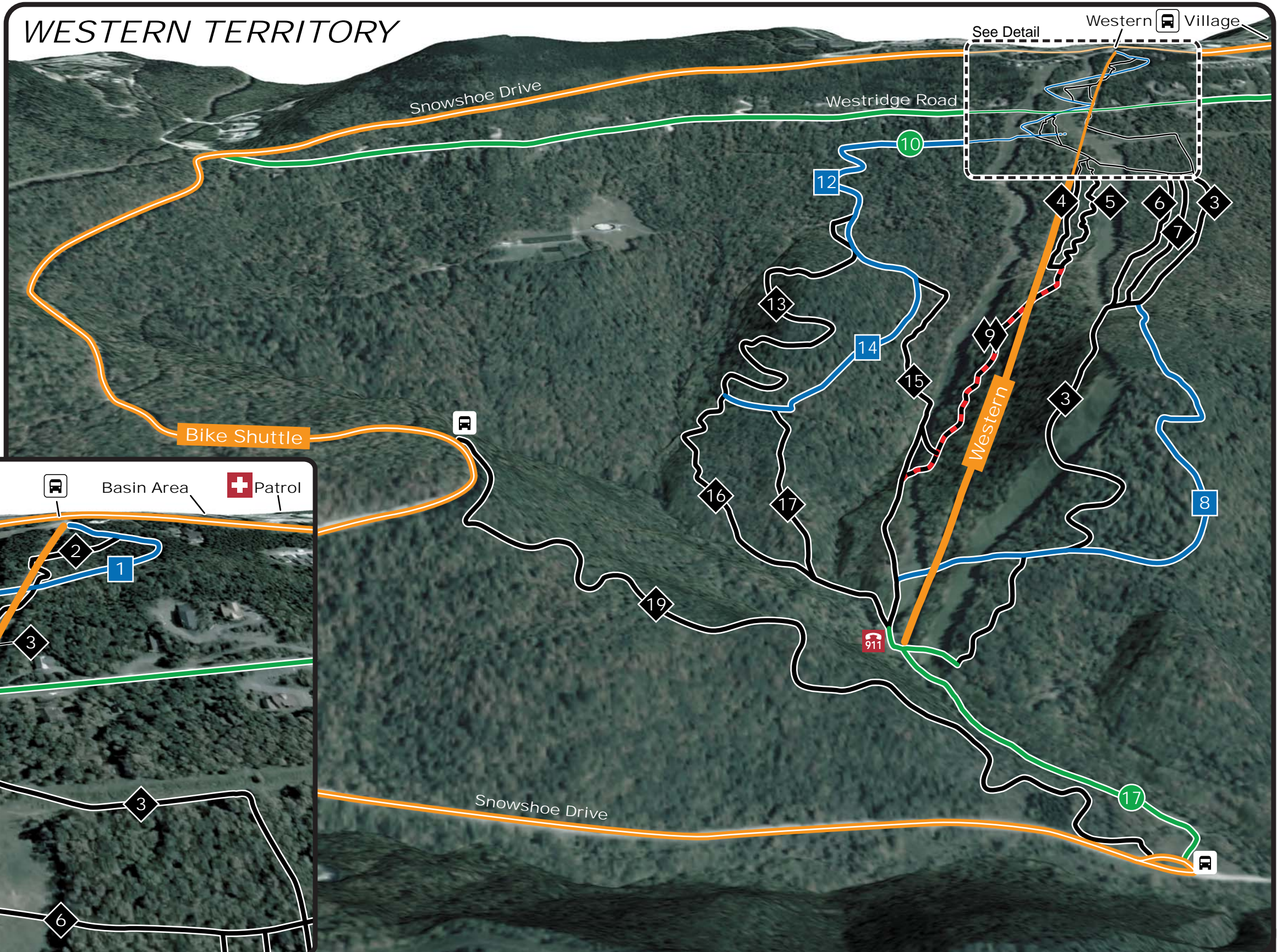
Snowshoe Mountain Bikers Responsibility Code

1. You must have a valid Bike Park Pass to enter this trail system; passes can be purchased at the Depot or the Mountain Adventure Center in the Village.
2. It is your responsibility to maintain control, ride within your ability level, and avoid other people and objects around you.
3. Do not stop on trails and obstruct traffic. If you must stop before the end of a trail, move yourself, your bike, and gear off the side of the trail.
4. Helmets are mandatory in the Bike Park.
5. Slower riders should yield to faster riders.
6. Hiking in the Bike Park is prohibited.
7. Stay off closed trails and obey all posted signs and warnings; failure to do so will likely result in revocation of your trail pass.
8. If you are involved in or witness a collision or accident identify yourself to Bike Patrol.
9. Never enter the Bike Park while under the influence of drugs or alcohol.
10. Please do not approach or disturb wildlife.

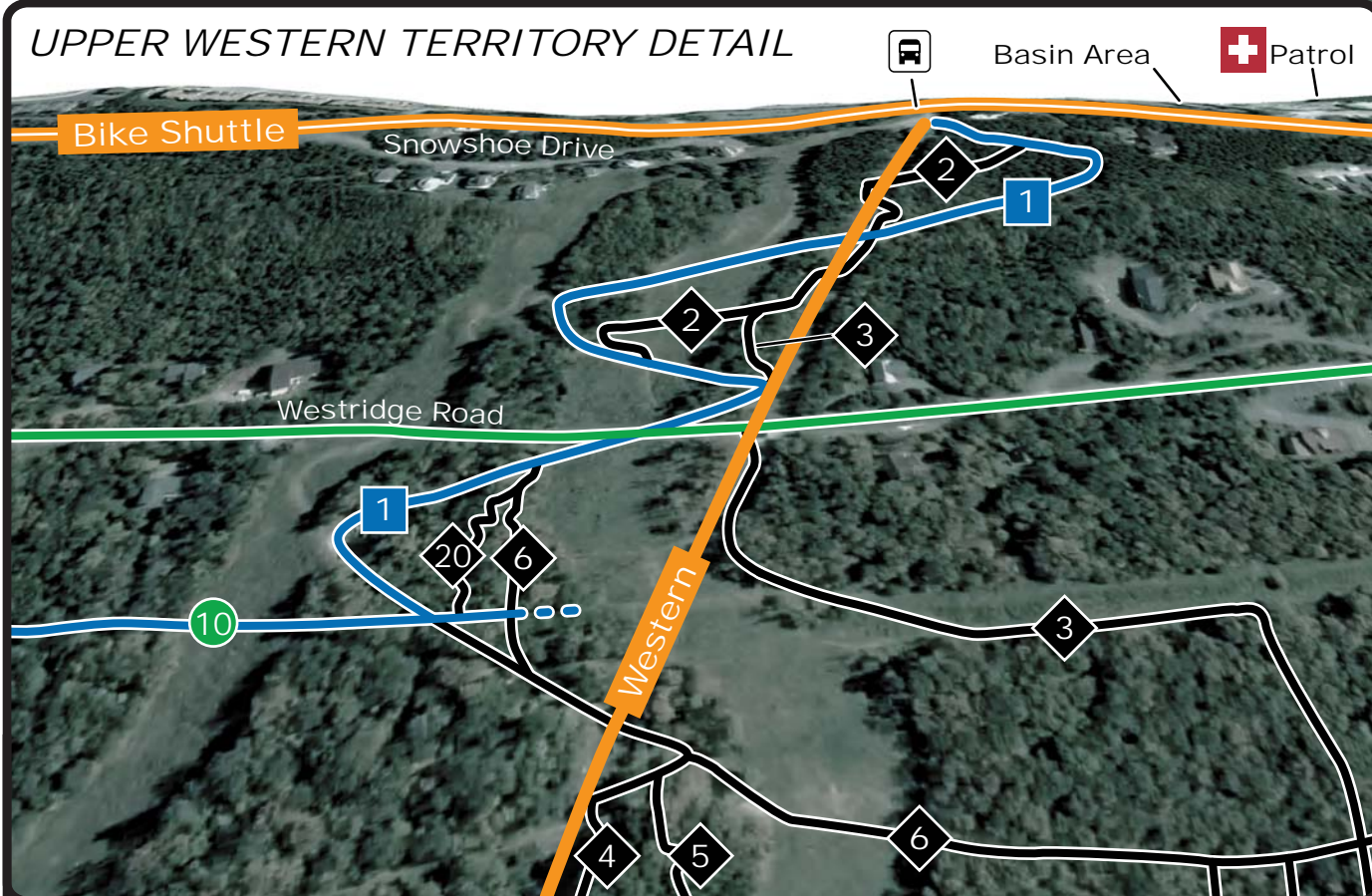
Be Aware

- Terrain changes constantly due to weather and use.
- Check the daily trail report at the Mountain Adventure Center or the Depot for Bike Park Hours, Lift Operation Hours, and Shuttle Hours.
- These trails have been designed and constructed for Advanced and Expert Mountain Bikers.
- There are inherent risks when using these trails. Serious injury and / or equipment damage can occur. By using this area you are assuming the risk of all such injury and damages.

WESTERN TERRITORY



UPPER WESTERN TERRITORY DETAIL



EASIEST
Warning! There is no top to bottom easiest route on Western Territory.
 10 Cross Over (to 12)
 17 Short Bus

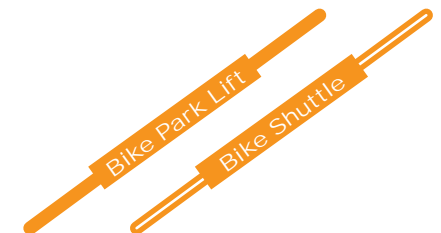
INTERMEDIATE
 1 Cupp Cake
 8 Chainsmoke
 12 Ninja Bob
 14 Ball-N-Jack

ADVANCED
 2 10 Gallon
 3 PRO DH
 4 Quick Draw
 5 Upper Hare Ball

6 5 Year Back
 7 OG
 13 Missing Link
 15 Cliff Jenkins

16 Powerline
 17 Sweet Dream
 19 Ruff-N-Tumble
 20 Judi Chop

EXPERT ONLY
 9 Lower Hare Ball



- Bike Shuttle Stop
- First Aid
- Emergency Phone